

QuickSender GPS

Quick Post with templates

Quick post to twitter, send Email or SMS from templates with geo info & map URL.

Features include:

- o Easy operation. – Only select and tap a large icon.
- o Supporting variables and functions in templates – variables: Latitude/Parallel, Address, Google Maps URL, Speed, Altitude, direction, Starting up the camera - functions: distance and format and calculate estimated time of arrival, etc...
- o Easy to insert variables with push buttons.
- o Conveniently templates and multiple destinations.
- o Two fingers tap to starting up the camera. Three fingers to select from photo library.
- o The taken photograph is automatically saved to the photo library.
- o Exif Supported (iOS 4.1 or later)
- o You can choose resolution and quality of JPEG picture.
- o Twitter Geotagging API is supported.

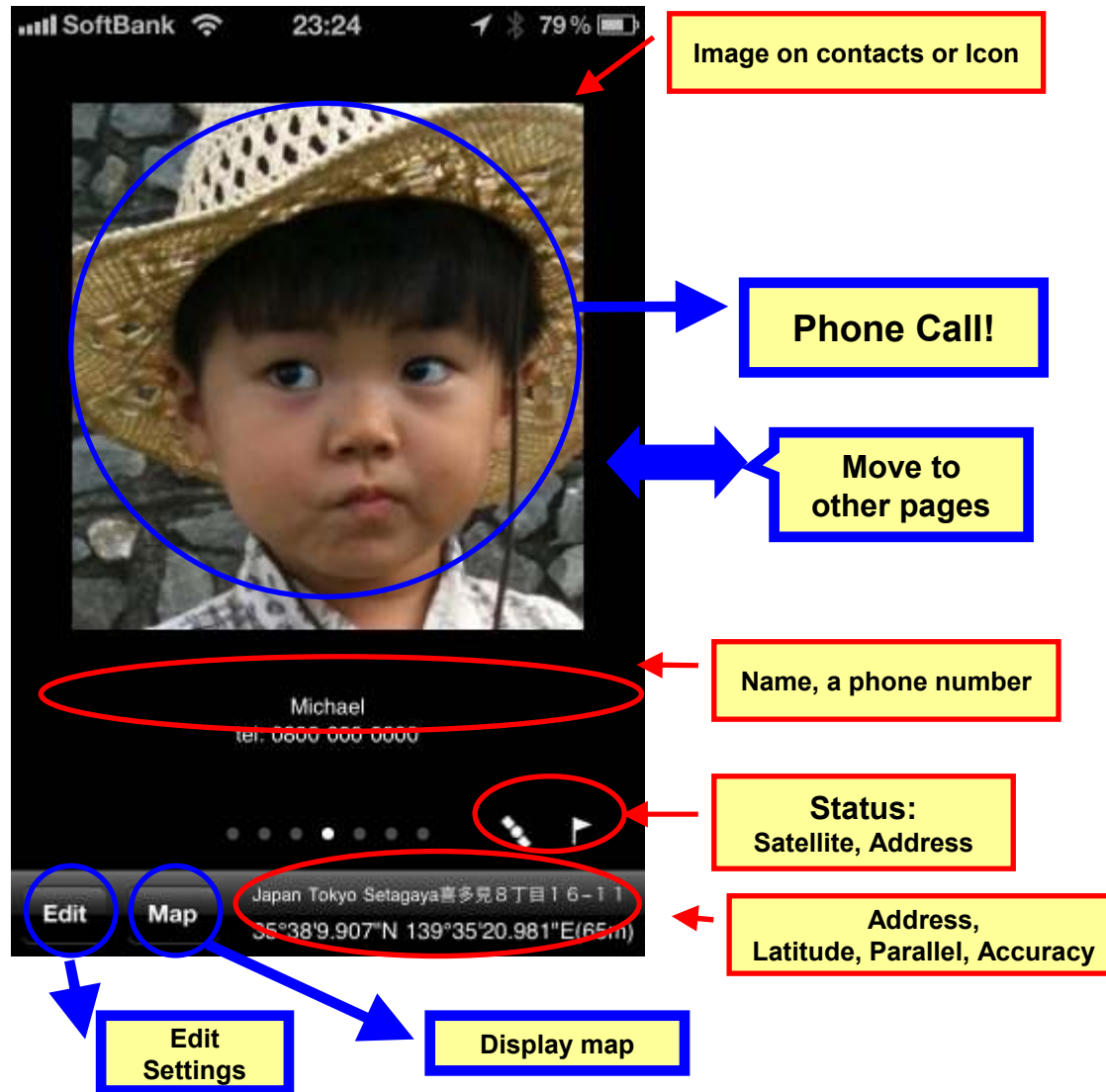
N.B.

- o Not supported: MMS.
- o Turn on Wi-Fi to make better accuracy.
- o If you have any questions, please send email to 'do-support@int21.co.jp'.

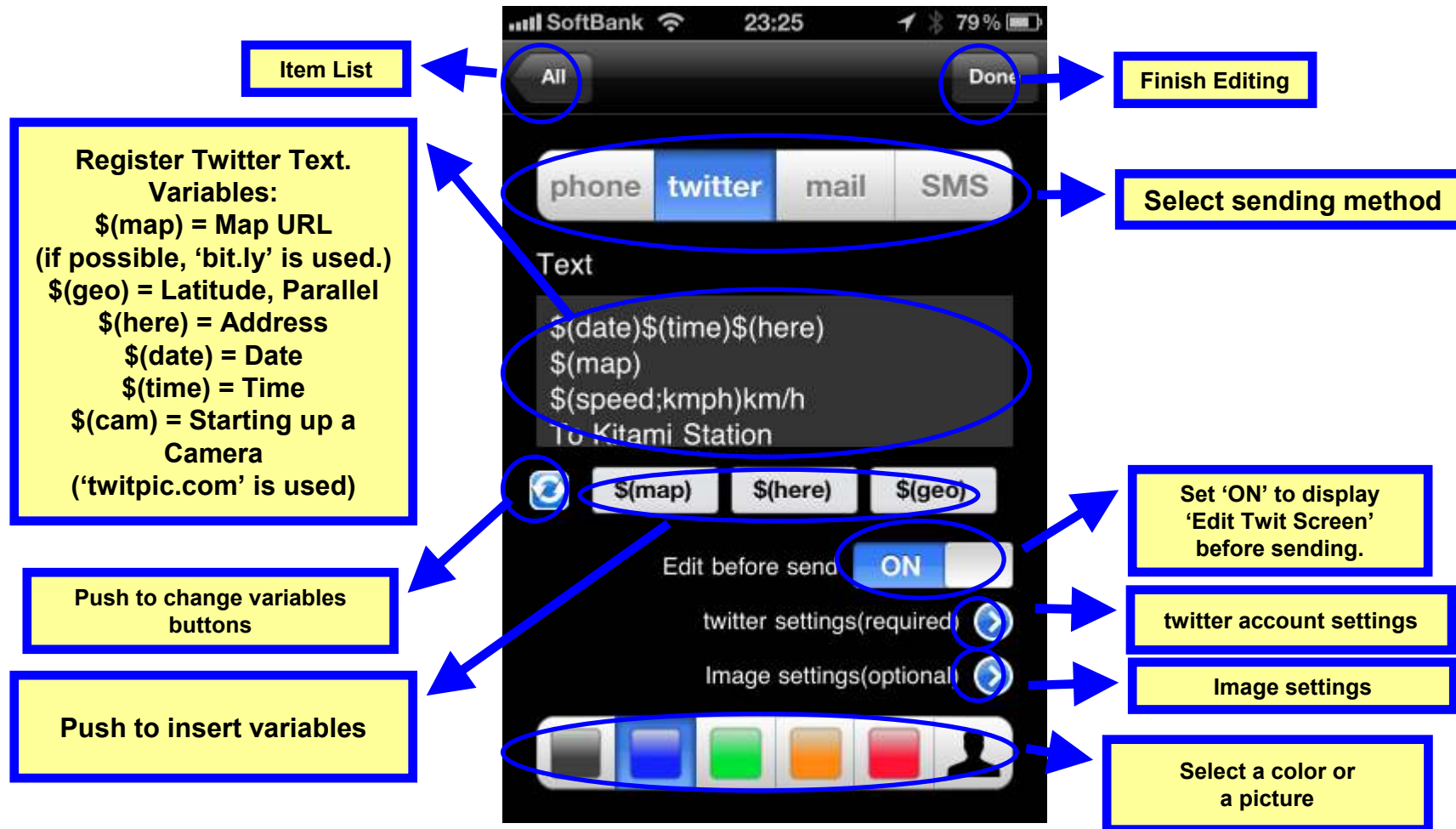
Phone Settings



Phone Call



Twitter Settings



Twitter account Settings

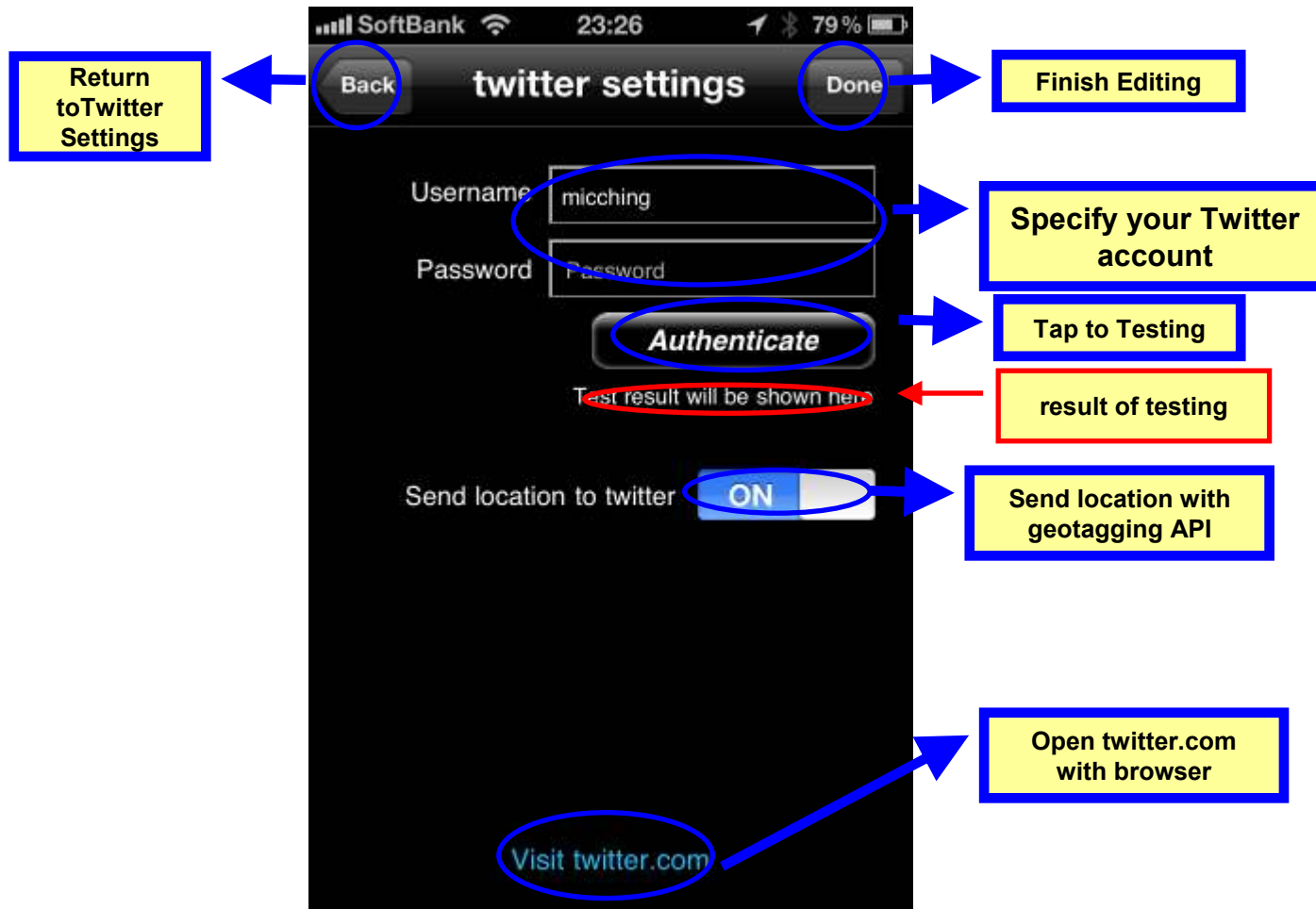
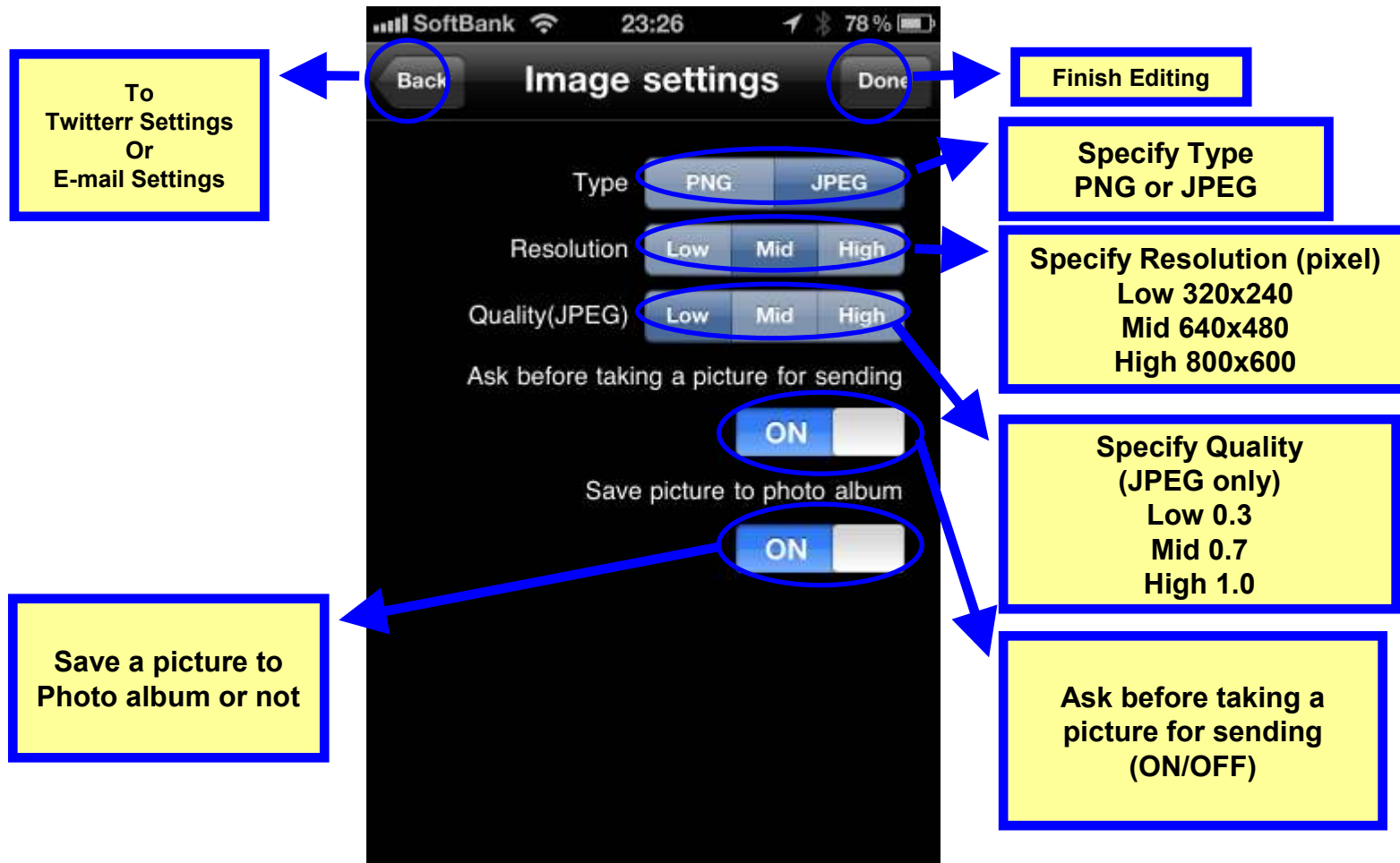
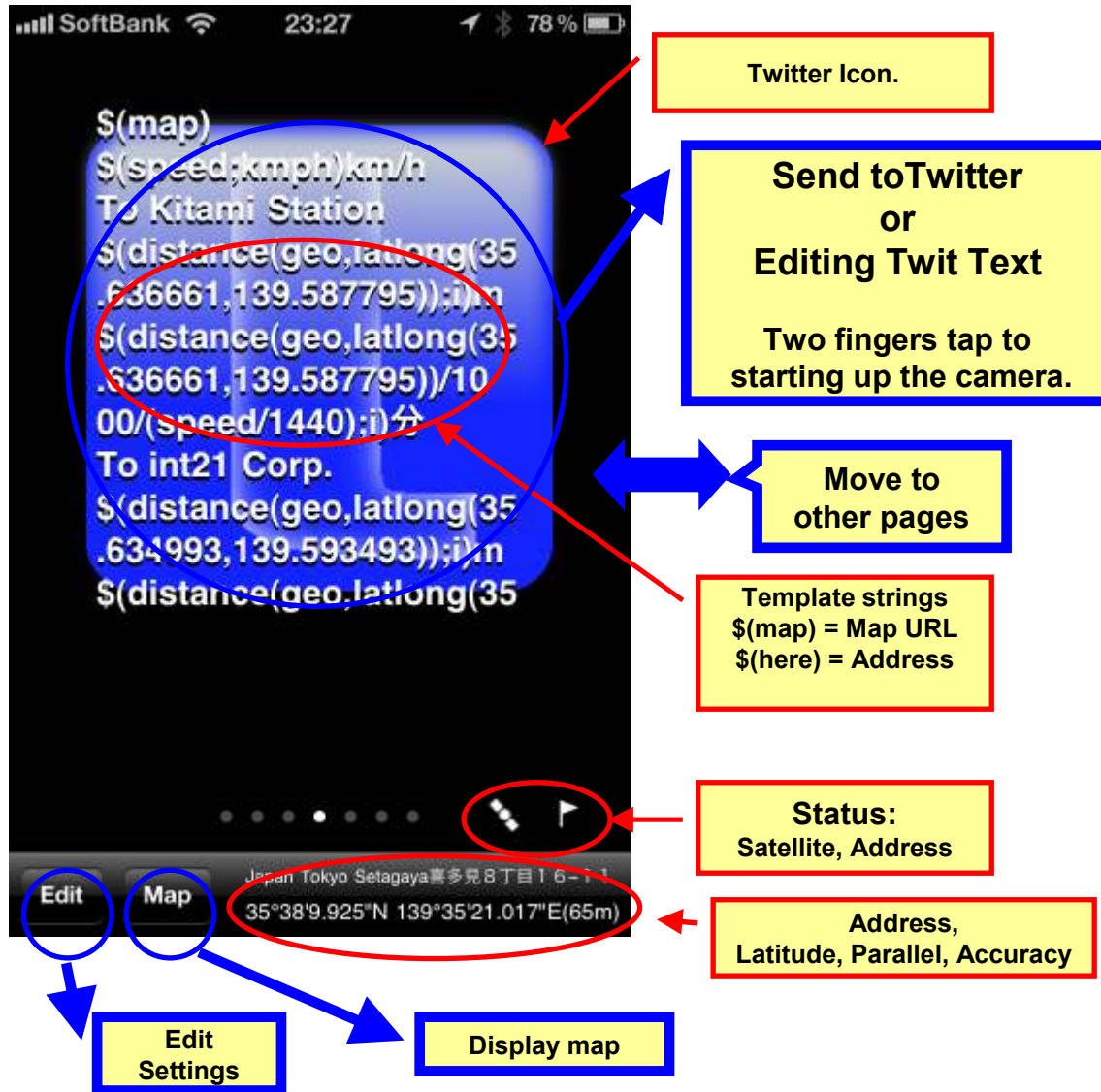


Image Settings



Send to Twitter



Editing Tweet Text

The image shows a screenshot of the Twitter app on an iPhone. The status bar at the top displays 'SoftBank', signal strength, Wi-Fi, the time '23:28', and a battery level of '78%'. The Twitter header shows the 'Cancel' and 'Send' buttons. The tweet text is: '10/11/17 23:28 Japan Tokyo Setagaya 喜多見 8丁目 16-1 http://bit.ly/difH2Y 0km/h To Kitami Station 139m 分 To int21 Corp. 408m'. A red oval highlights the text 'Text is too long.' and '-10'. A blue oval highlights the 'Send' button. A red oval highlights the photo view of the iPhone back. Callout boxes provide additional information: 'Cancel Sending' points to the 'Cancel' button; 'Send to Twitter' points to the 'Send' button; 'Text length warning after expanding variables.' points to the 'Text is too long.' message; 'Number of letters you can write' points to the '-10' character count; 'You can edit a template. Variables were expanded. If possible, use shortened URL by 'bit.ly'.' points to the URL; and 'Photo view' points to the photo view of the iPhone back.

Cancel Sending

Cancel

Twitter

Send

Send to Twitter

Text length warning after expanding variables.

Text is too long.

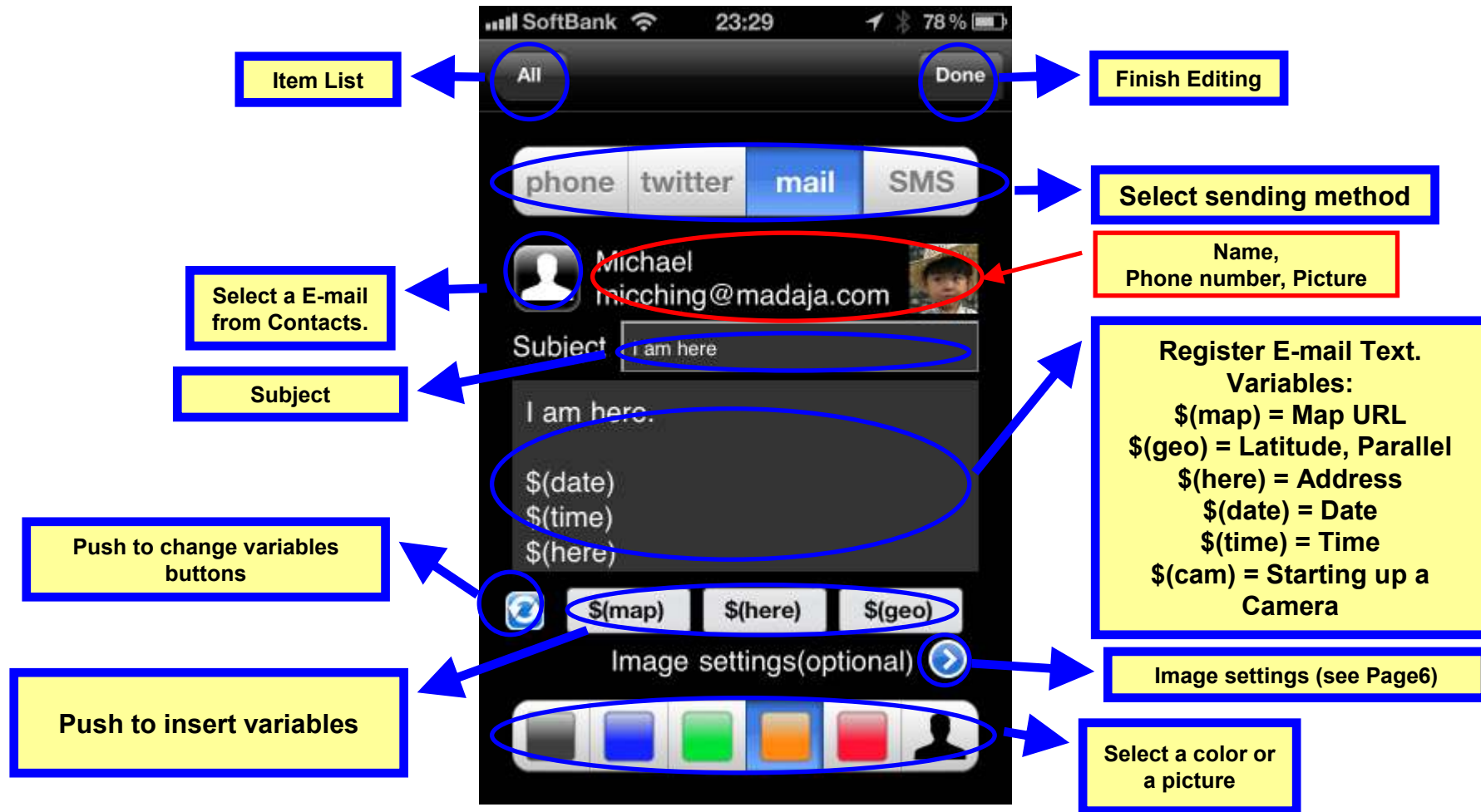
-10

Number of letters you can write

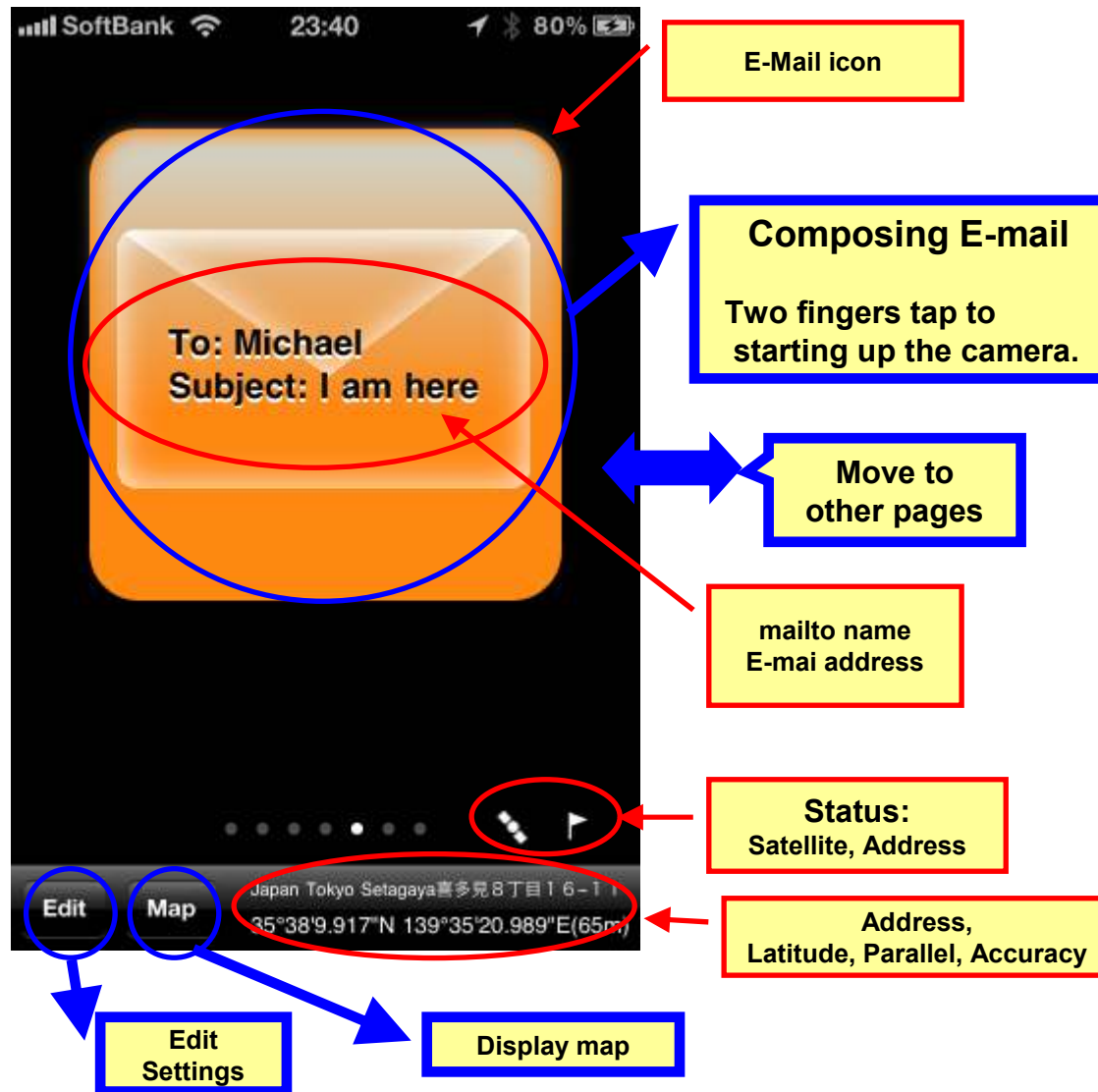
You can edit a template. Variables were expanded. If possible, use shortened URL by 'bit.ly'.

Photo view

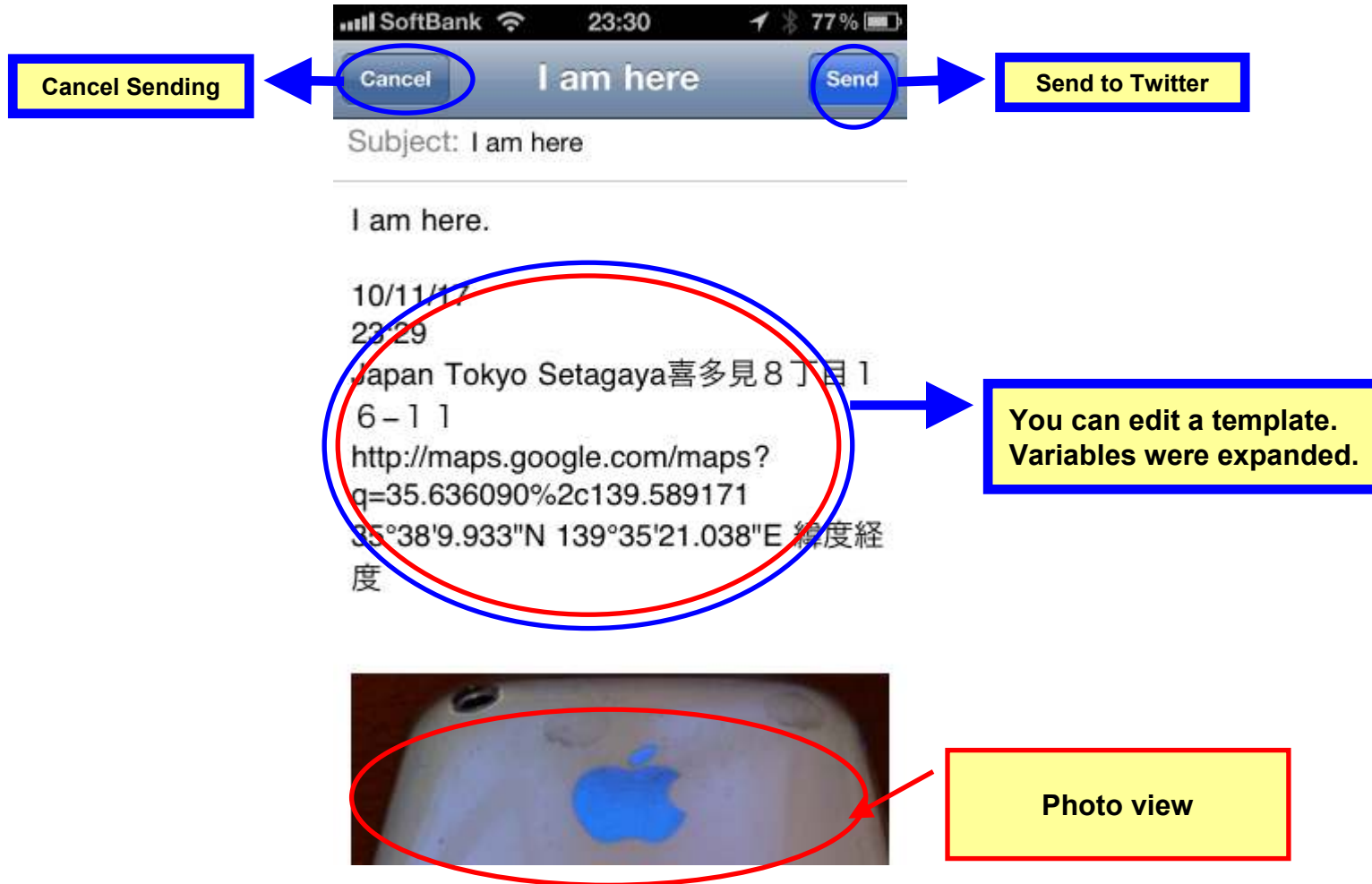
EMail Settings



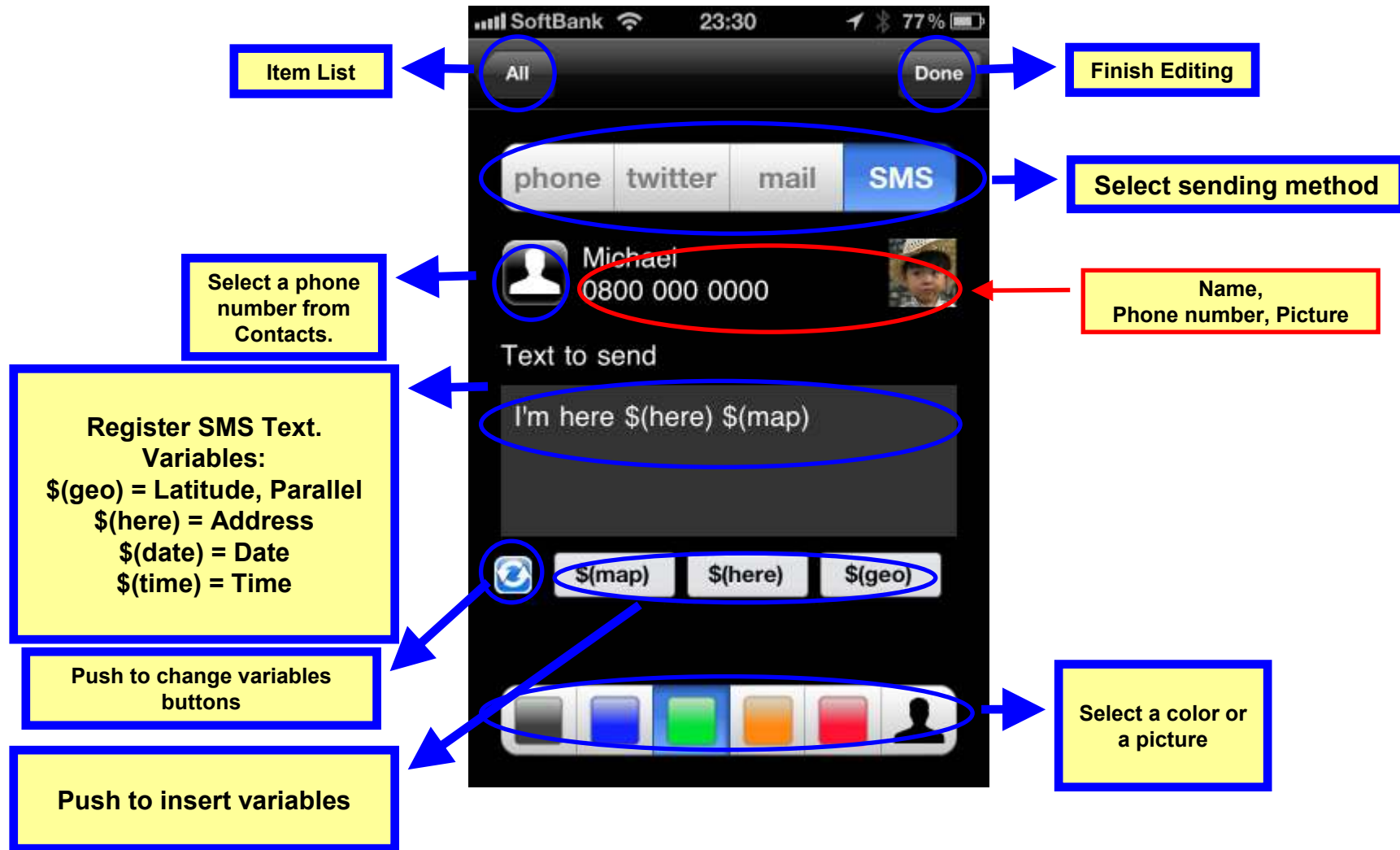
Sending E-mail



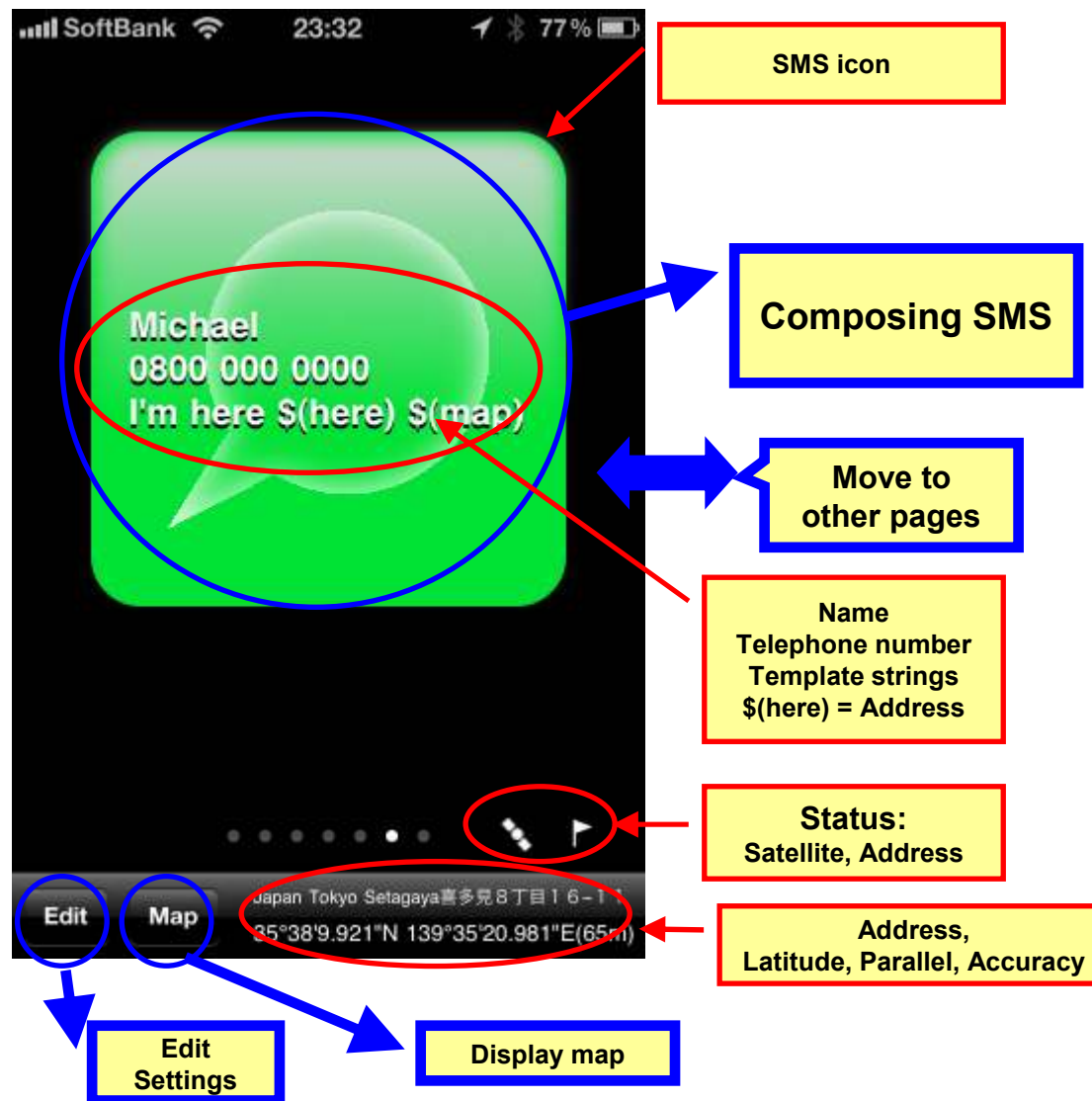
Composing E-mail (out of app)



SMS Settings



Sending SMS



Composing SMS (out of apps)



Items List

